

BOTTOM ENTRY CABINET

- NOTES:
1. INSTALLATION SHALL COMPLY WITH ALL APPLICABLE NATIONAL, STATE AND LOCAL ELECTRICAL REGULATIONS.
  2. REFER TO PRODUCT DOCUMENTATION FOR ADDITIONAL DETAILS PRIOR TO INSTALLATION AND SITE PREPARATION WORK.
  3. INSTALL THE BOTTOM ENTRY CABINET ON THE RIGHT SIDE OR LEFT SIDE OF THE UPS AS PER THE REQUIREMENT.
- ⚠ IT IS RECOMMENDED TO BOLT THE CABINET TO FLOOR. USE THE FRONT AND REAR TRANSPORT BRACKETS TO MOUNT THE CABINET TO FLOOR.

THIS DRAWING AND SPECIFICATIONS HEREIN ARE THE PROPERTY OF SCHNEIDER ELECTRIC AND SHALL NOT BE COPIED, REPRODUCED OR USED IN WHOLE OR IN PART, AS THE BASIS FOR THE MANUFACTURE OR SALE OF ITEMS WITHOUT WRITTEN PERMISSION FROM SCHNEIDER ELECTRIC. THIS DRAWING IS BASED UPON LATEST AVAILABLE INFORMATION AND IS SUBJECT TO CHANGE WITHOUT NOTICE.

**Schneider Electric**

TITLE:  
Galaxy PX/Easy UPS 3-Phase Modular  
BOTTOM ENTRY CABINET  
ISOMETRIC VIEW

PROJECT: SUBMITTAL DRAWINGS SHEET 1 OF 2

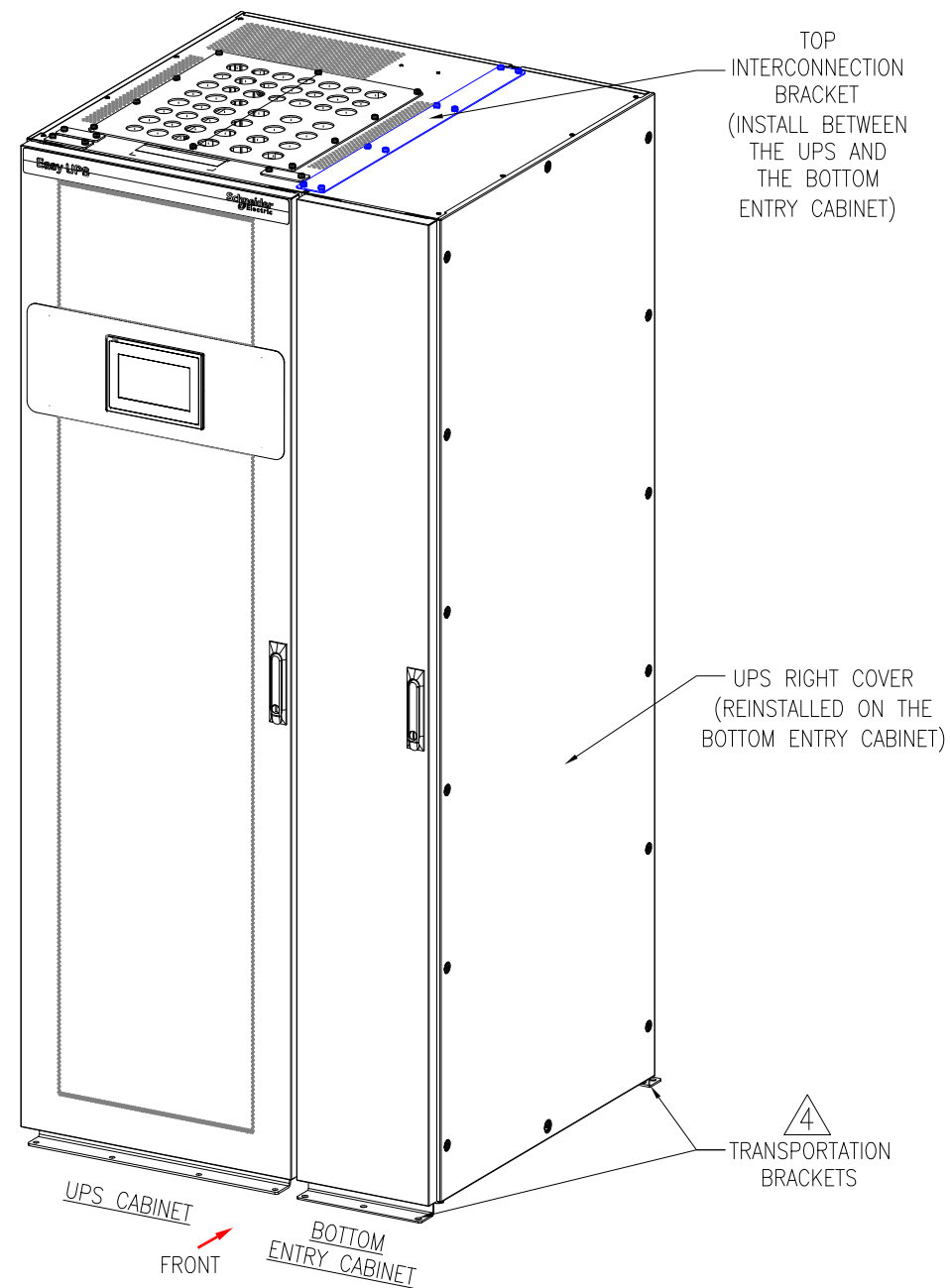
DWG NO: SP3BBEC

DRAWN: RANJITHA 15-NOV-22

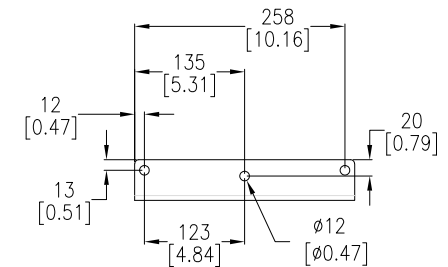
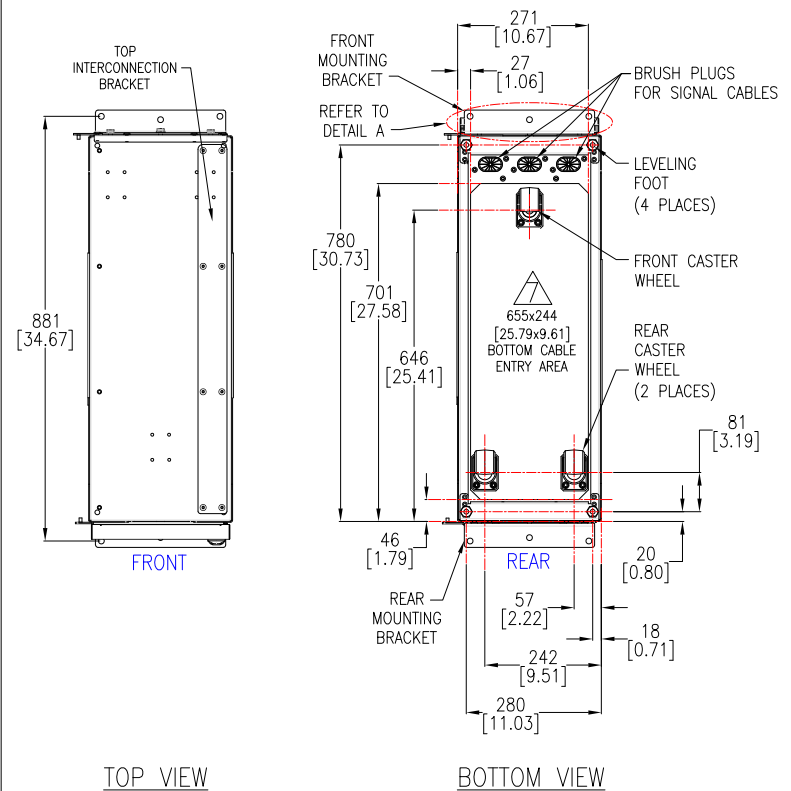
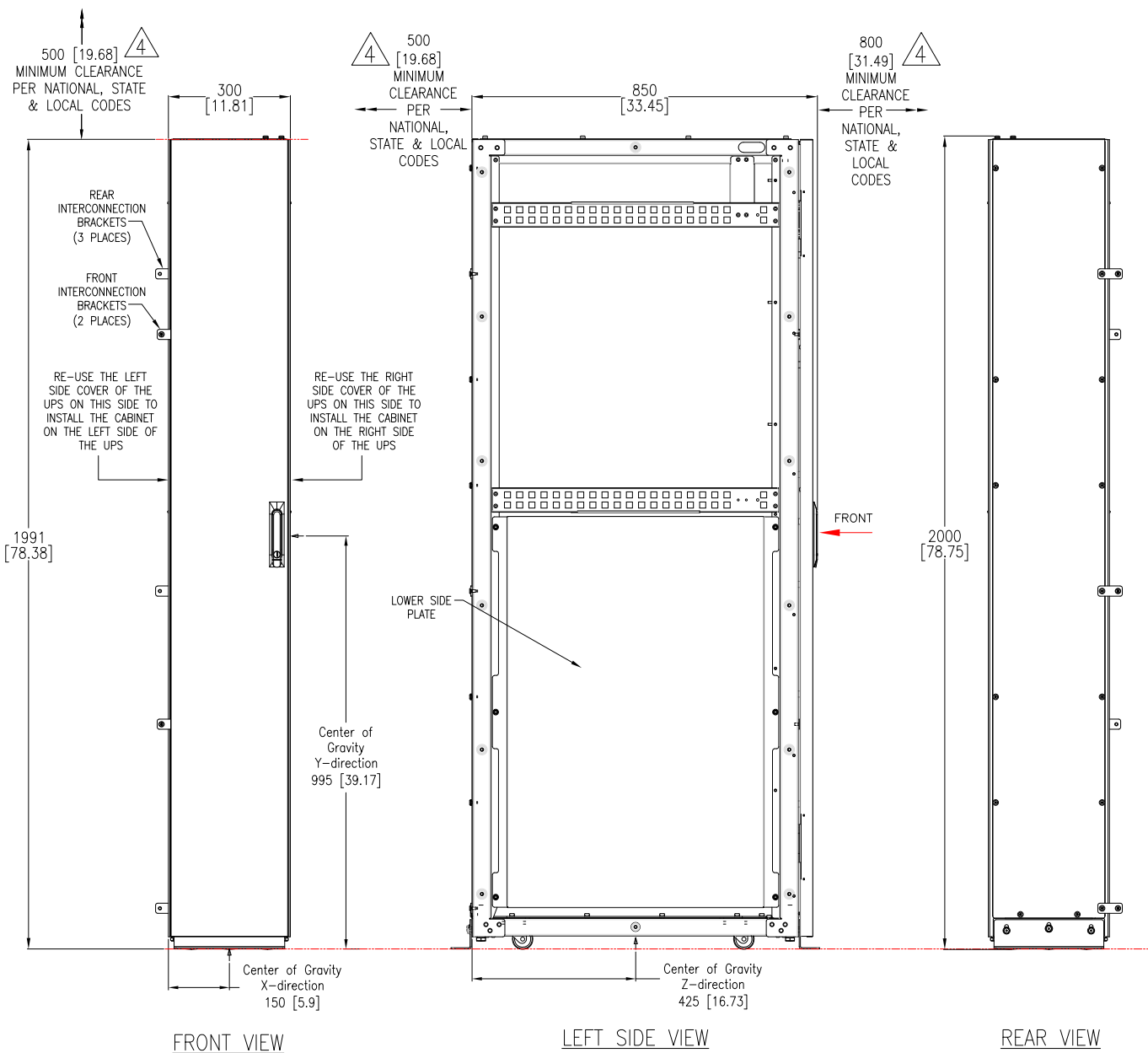
ENGINEER: XYZ DD-MM-YY

APPROVED: ABC DD-MM-YY

REV. 0 FIRST ANGLE PROJECTION



TYPICAL ILLUSTRATION SHOWN FOR BOTTOM ENTRY CABINET  
INSTALLED ON RIGHT SIDE OF THE UPS



- NOTES:**
1. INSTALLATION SHALL COMPLY WITH ALL APPLICABLE NATIONAL, STATE AND LOCAL ELECTRICAL REGULATIONS.
  2. REFER TO PRODUCT DOCUMENTATION FOR ADDITIONAL DETAILS PRIOR TO INSTALLATION AND SITE PREPARATION WORK.
  3. ALL DIMENSIONS ARE IN MILLIMETERS [INCHES].
  4. CLEARANCE DIMENSIONS ARE MEANT FOR AIRFLOW AND SERVICE ACCESS ONLY. CONSULT WITH THE LOCAL SAFETY CODES AND STANDARDS FOR ADDITIONAL REQUIREMENTS IN YOUR LOCAL AREA.
  5. WEIGHT: 62kg [136.7lb]. OPERATING TEMPERATURE: 0°C TO 40°C [32°F TO 104°F]. COLOR: BLACK. PROTECTION CLASS: IP20.
  6. CABLE ENTRY IS FROM BOTTOM OF THE UNIT ONLY.
- ⚠️ DRILL/PUNCH HOLES IN GLAND PLATE AS PER THE REQUIREMENT. REMOVE PLATE FROM CABINET BEFORE DRILLING/PUNCHING.

THIS DRAWING AND SPECIFICATIONS HEREIN ARE THE PROPERTY OF SCHNEIDER ELECTRIC AND SHALL NOT BE COPIED, REPRODUCED OR USED IN WHOLE OR IN PART, AS THE BASIS FOR THE MANUFACTURE OR SALE OF ITEMS WITHOUT WRITTEN PERMISSION FROM SCHNEIDER ELECTRIC. THIS DRAWING IS BASED UPON LATEST AVAILABLE INFORMATION AND IS SUBJECT TO CHANGE WITHOUT NOTICE.

**Schneider Electric**

**TITLE:**  
Galaxy PX/Easy UPS 3-Phase Modular  
BOTTOM ENTRY CABINET  
GENERAL ARRANGEMENT

PROJECT: SUBMITTAL DRAWINGS SHEET 2 OF 2

**DWG NO:** SP3BBEC

**DRAWN:** RANJITHA 15-NOV-22

**ENGINEER:** XYZ DD-MM-YY

**APPROVED:** ABC DD-MM-YY

**REV.** 0

**FIRST**

**ANGLE**

**PROJECTION**